

## Customized Conveyor Chains for Bulk Material Handling System



## INDO CHAINS VISION, MISSION AND VALUSES

### MISSION :

To become world's Leading Quality Suppliers of Industrial Material handling Chains & it's Accessories by delivering Quality & Unparallel response, services & satisfaction to its Clients.

### VISION :

Indo Chains Raipur Pvt. Ltd. Is an INDIAN, Technocrats based company and is committed towards its VISION of becoming a world class cost effective Material handling solution provider with a passionate commitment to deliver the unmatched Quality Product to the Industry.

### VALUES :

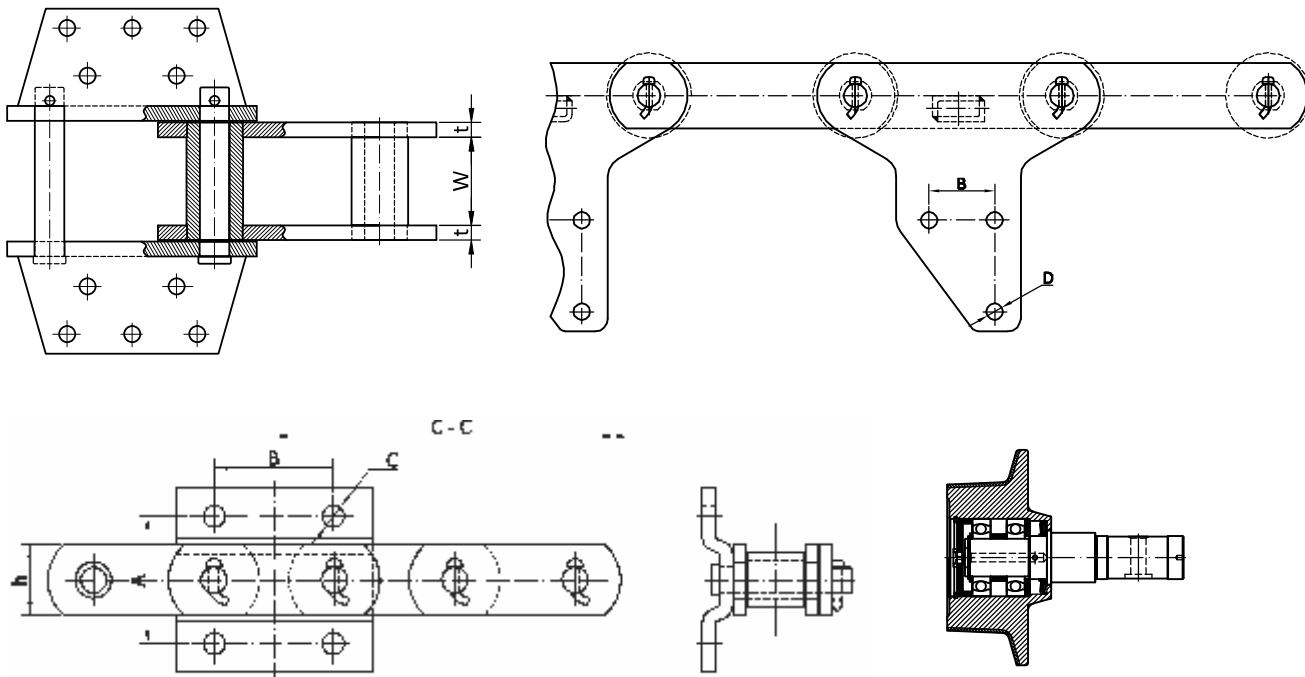
Our values are focused towards our VISION to serve as per guidelines of Our Conduct & Behavior providing utmost Satisfaction, Quality & Care to its Employees & Clients.

## Introduction of Company

Indo Chains was established in the Year 1981 in the City of Raipur, Chhattisgarh by our fervent leader Shri S.S. Parspampurua. Under his long standing experience and guidance, we were able to establish ourselves as a roaring business house. As a result of our COMMITMENT towards excellence, we are now a Company growing in double digits.

Indo Chain is one of the world's leading producers of chains and accessories parts for the bulk material in the handling industry. Innovation and high quality standards have been quite essential to our family business for over 35 years. Our Product's Reliability, Durability, Quality, Manufacturing, Finish have been found to be the best and one of the finest in the world equally comparable to any other globally renounced supplier. Our team of technical experts continuously keeps a close watch on the product / components manufactured in the factory at every stage from the Incoming Raw Material to the final Dispatch. Every manufacturing step is closely monitored under strict and stringent quality parameters to provide our customer with the best in class performing product and to the best of their satisfaction.

Indo Chains manufacturing plants are accredited with ISO 9001 : 2015. The Company's inherent potential coupled with its strong performance over the years has resulted in it being chosen as one of the best Manufacturing Units which would enjoy support from the prestigious clients in their endeavors to become global players.



## PRODUCT RANGE

### **BUCKET ELEVATORS CHAINS:**

For Conveying Material in - RAW MILL/COAL MILL/  
KILN FEED/CEMENT MILL / PACKING PLANT etc.

### **BUSH PIN CHAINS:**

For Conveying Material in - RAW MILL/COAL MILL/  
KILN FEED/CEMENT MILL / PACKING PLANT etc.

### **RECLAMIER CHAINS:**

For Handling LIME STONE/COAL/SLAG etc.

### **DEEP PAN CONVEYORS CHAINS:**

For CLINKER HANDLING etc.

### **DEEP BUCKET CONVEYOR CHAINS:**

For CLINKER HANDLING etc.

### **APRON CONVEYOR CHAINS:**

Handling - Lime stone, Coal etc.

### **FLOW CONVEYOR CHAINS:**

Area of Application for DUST CONVEYING  
Below BAG HOUSE / ESP & other applications

### **DRAG CHAIN FEEDER CHAINS:**

Area of Application for DUST CONVEYING  
Below BAG HOUSE / ESP & other applications

### **SPARES FOR CHAINS:**

Pans, Buckets, Rollers, Pins, Bush, Links  
DBC/DPC buckets & Rollers.

### **CURTAIN CHAINS:**

Area of Application KILN/COOLER/CRUSHER etc.

### **TYRE PROTECTION CHAINS:**

For ALL Tyre Size ranging between (14X25 to 45X65 R65)

### **SPECIAL PURPOSE CHAINS:**

(TAILOR MADE as per your Drawings)



### Quality Assurance :

During the manufacturing of our present range, our quality inspectors make certain that the production process and the finished Product meets required Quality Standards is to Precisely Manufacture durable and sturdy Chains following Strict Quality Norms as per International Standard with the help of advanced testing machines and equipment.

# QUALITY & RELIABILITY



### Reliable Product for Material Handling Equipments

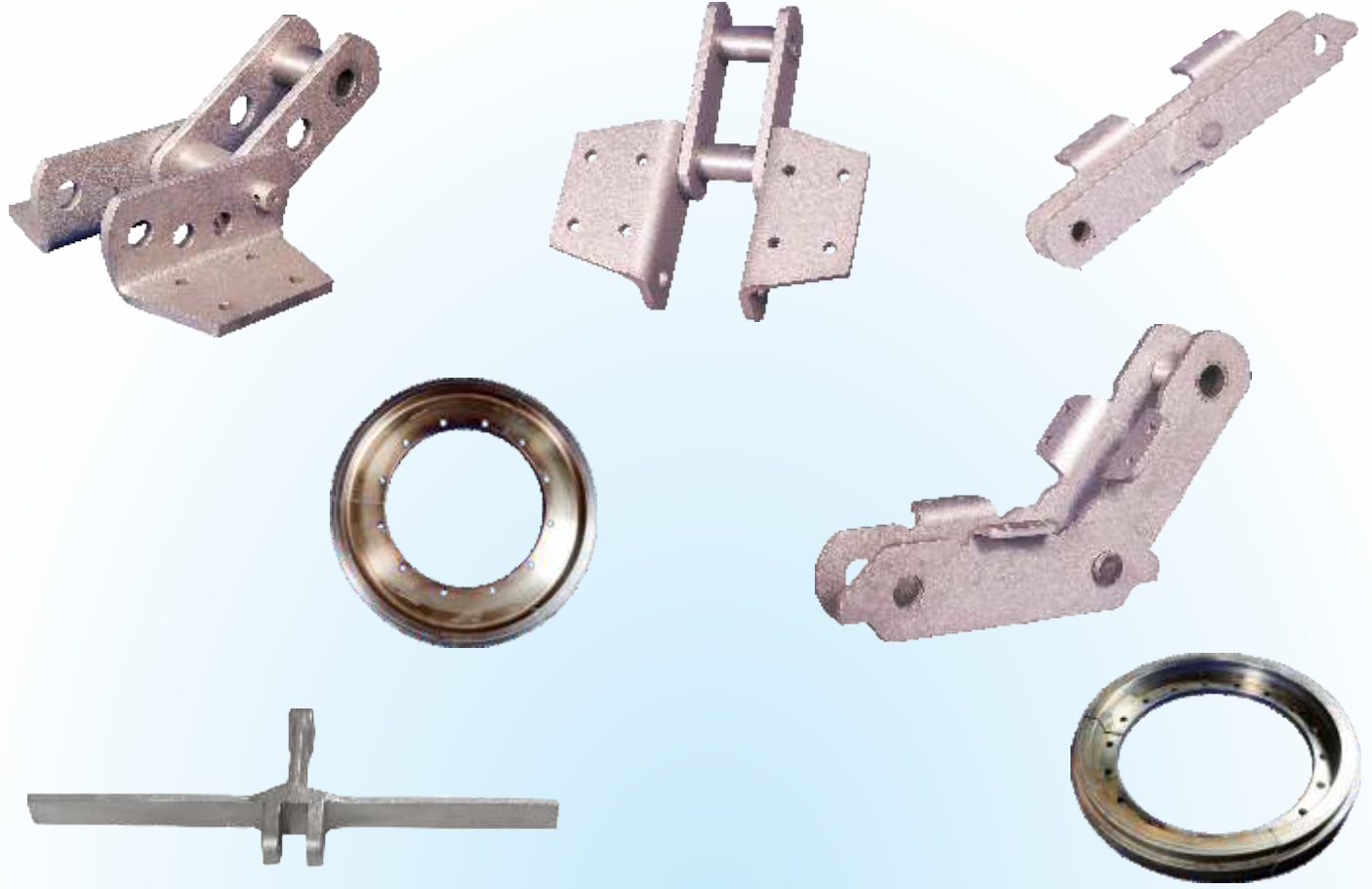
Using High grade raw Material and ensuring best manufacturing process followed by strict quality inspection INDO CHAINS (RAIPUR) PVT LTD offers the most reliable and cost economical solution for any requirement of chains and parts. We are graced as one of the most Globally Recognized, reliable and alternate Best Replacement for any requirements of chains & accessories; our quality and performance has been widely applauded by many top organizations internationally.

### Why Us?

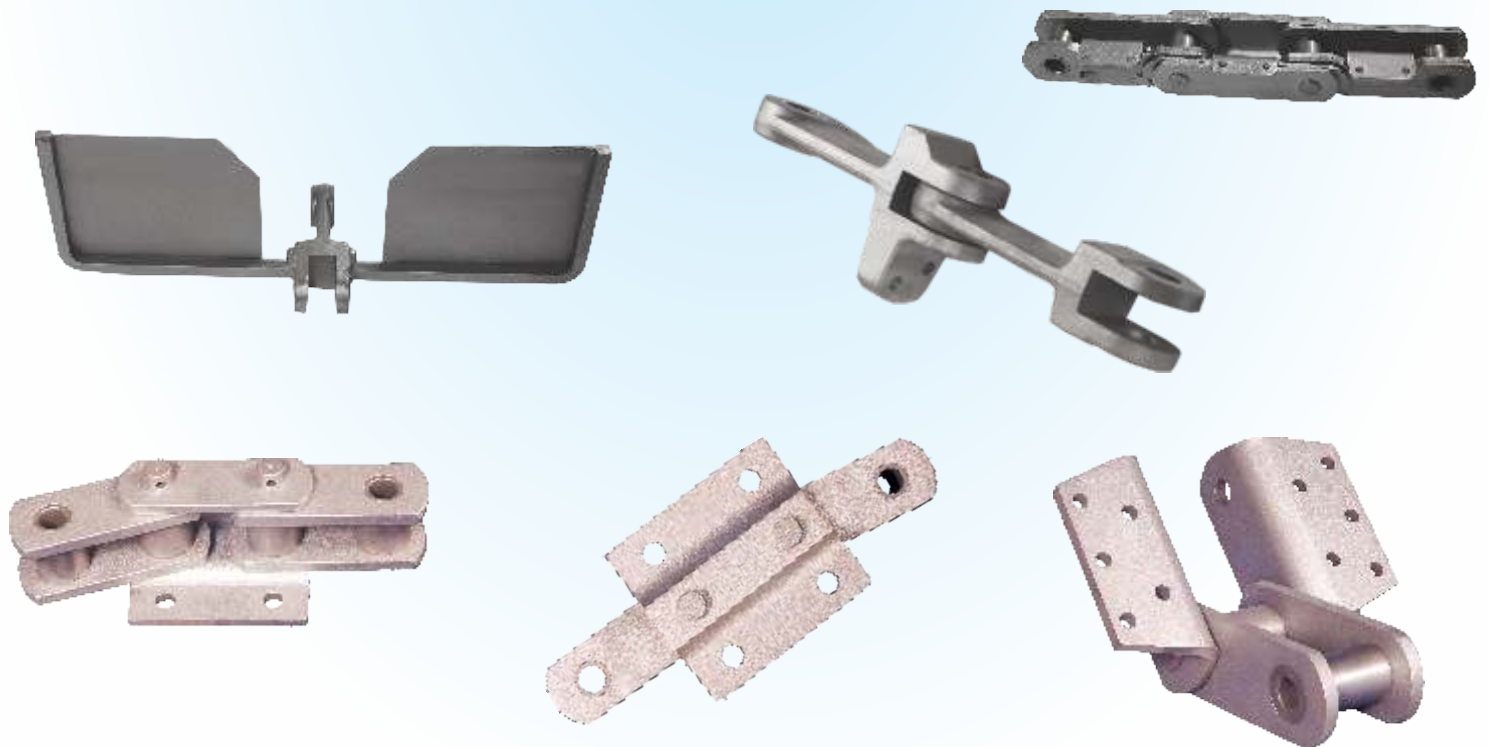
We have moved ahead of our competitors owing to the following reasons:

1. Products with world class quality
2. Ethical business policy with our client
3. Timely Delivery
4. Strict Quality parameters
5. Expert after sales services
6. Understanding & Catering to the Customer Needs

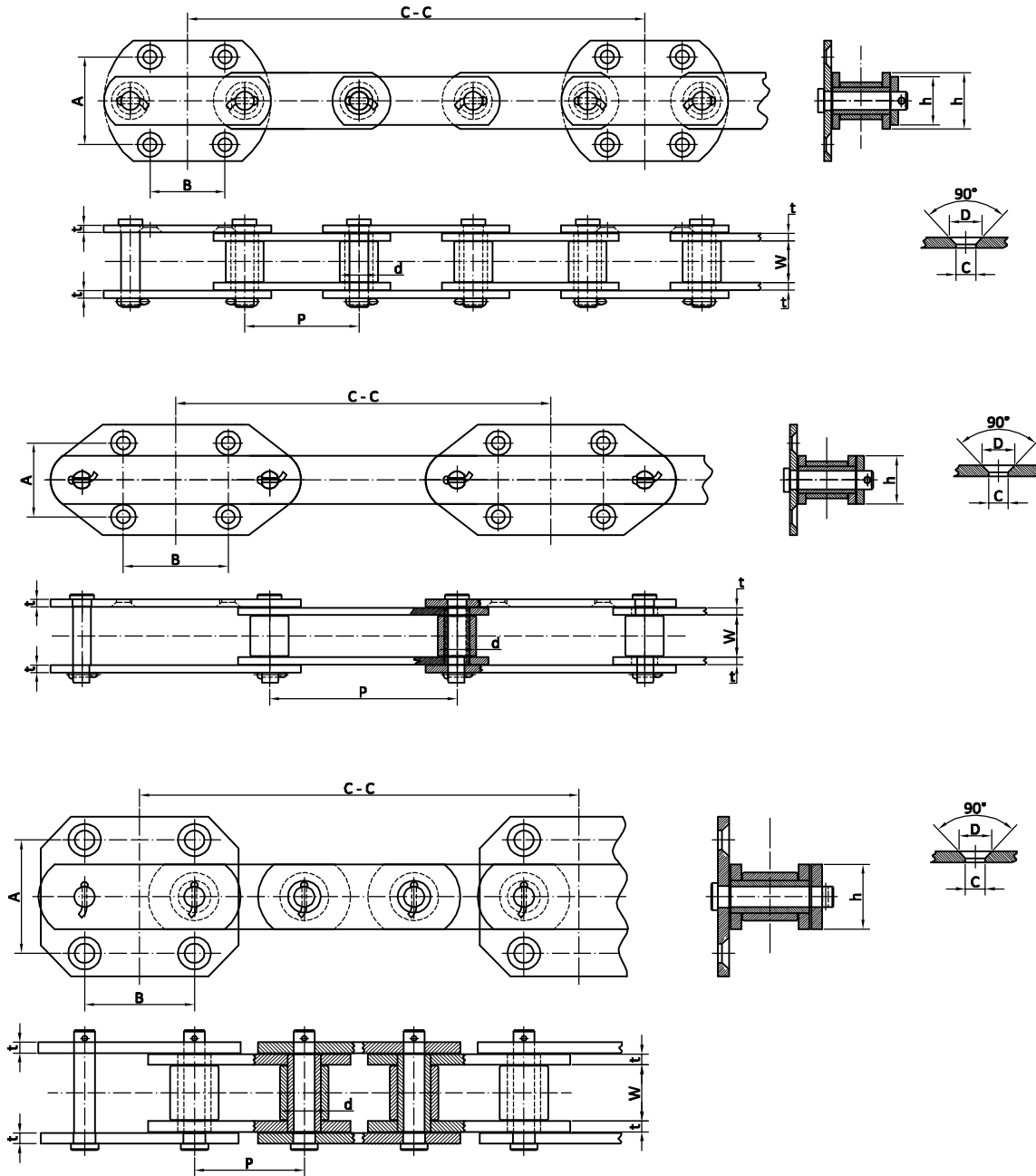




# PRODUCT DIMENSIONAL DETAILS

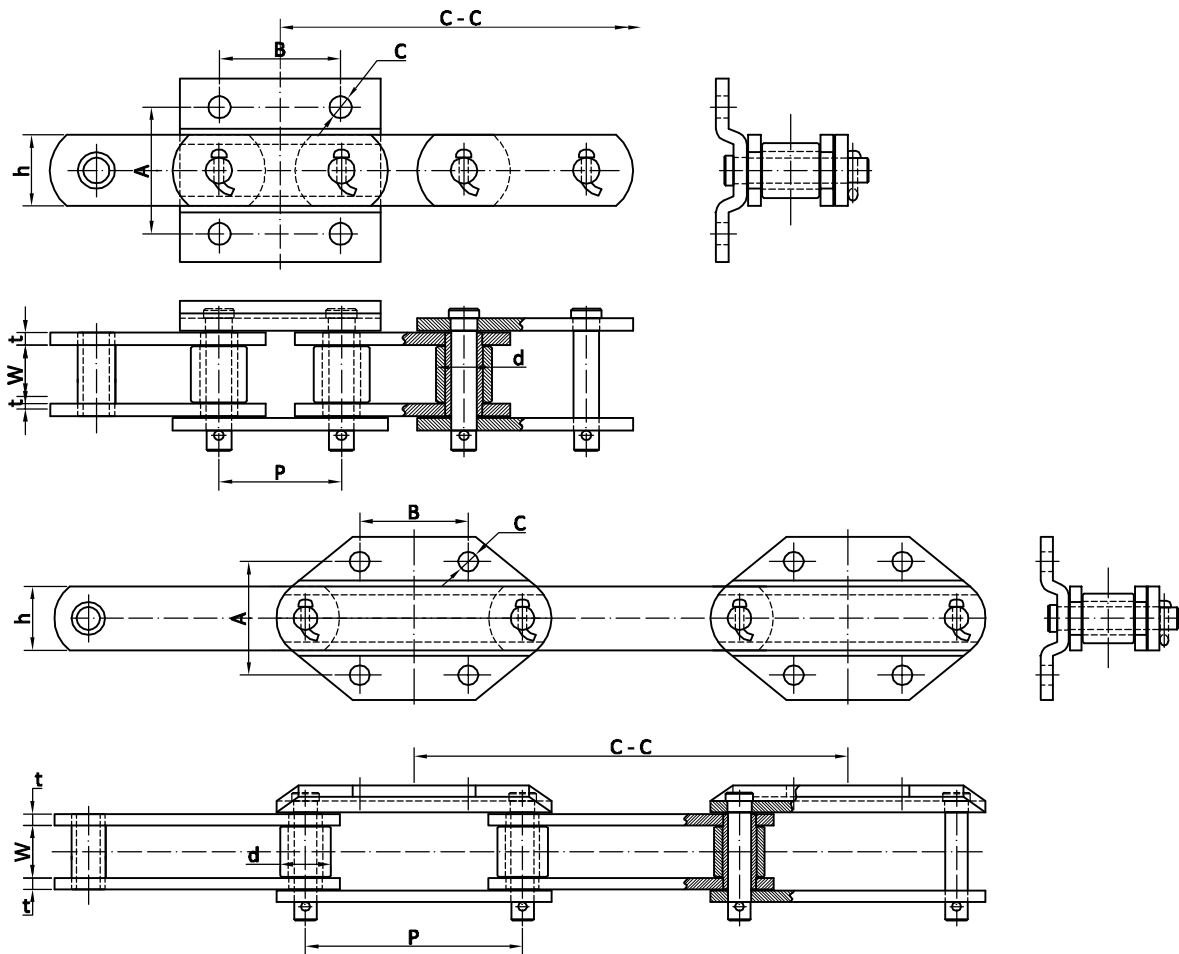


## Chains for Bucket Elevators double Strand



CHAIN NO.	Pitch	Width	Link Height	Link Thk.	Roller $\phi$				Bucket	Break	
	P	W	h	t	d	A	B	C	D	C-C	Load (KN)
ICR095125	125	68	90-80	12	63.5	130	125	$\phi 18$	$\phi 34$	500	950
ICR150125	125	83	115-100	16	75	150	125	$\phi 18$	$\phi 34$	500	1500
ICR057200	200	52	60	10	45	80	100	$\phi 18$	$\phi 32$	400	570
ICR075200	200	58	75	10	48	80	200	$\phi 18$	$\phi 33$	400	750
ICR052250	250	57	65	10	50.8	100	140	$\phi 18$	$\phi 33$	500	520
ICR056100	100	52	60	10	44.5	105	100	$\phi 18$	$\phi 31$	400	560
ICR140125	125	75.5	100	15-16	70	130	125	$\phi 18$	$\phi 32$	500	1400
ICR052300	300	57	65	10	50.8	100	170	$\phi 18$	$\phi 33$	600	520
ICR140175	175	85.5	110	15-14	74	180	175	$\phi 21$	$\phi 41$	700	1400

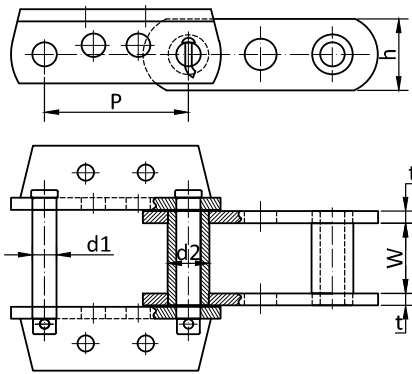
## Chains for Bucket Elevators double Strand



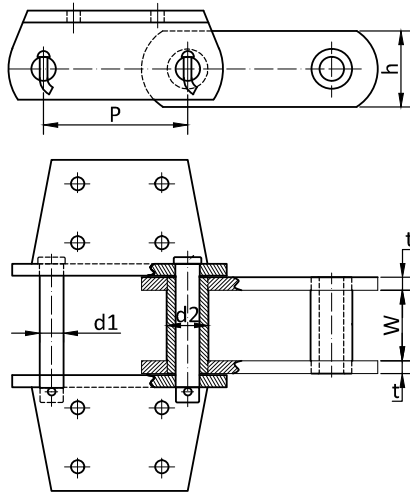
Chain No.	Pitch	Width	Link Height	Link Thk.	Roller $\phi$			Bucket	
	P	W	h	t	d	A	B	C	C-C
ICR30010	75	30.6	40	6	29	80	75	$\phi 14$	300
ICRS30010	150	30.6	40	6	29	80	75	$\phi 14$	300
ICR30012	76.2	37	45	8	35	80	75	$\phi 14$	304.8
ICR45012	100	37	45	8	35	100	100	$\phi 16$	400
ICRS45012	200	37	45	8	35	100	100	$\phi 16$	400
ICR30017	76.2	36	45-50	8-10	27.5	80	75	$\phi 14$	304.8
ICRL30017	125	51	50	10	40	110	125	$\phi 18$	500
ICR45017	100	51	50	10	40	100	100	$\phi 16$	400
ICRS45017	200	51	50	10	40	100	100	$\phi 16$	400
ICR45026	100	57	65	10	50.8	100	100	$\phi 16$	400
ICR60026	125	56	65	10	50.6	110	125	$\phi 18$	500
ICR60036	125	66.2	76	13	57	110	125	$\phi 18$	500
ICRL60036	125	77	90	13	60	130	125	$\phi 18$	500
ICR80036	150	66.2	76	13	57	140	150	$\phi 22$	600
ICR80060	150	76.5	90	13	70	140	150	$\phi 22$	600
ICR01190	175	87.5	110	16	60.1	150	175	$\phi 26$	700
ICR45057	100	56.2	75	10	50.7	100	100	$\phi 16$	400



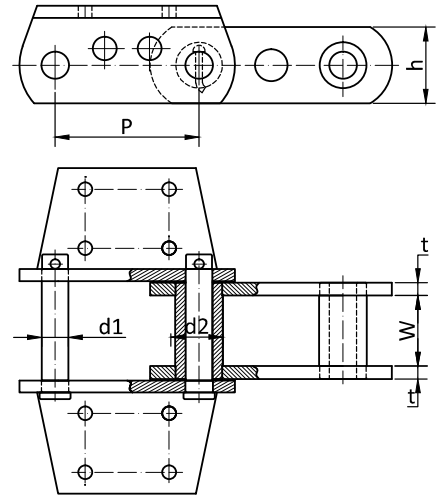
## Chains for Bucket Elevators Single Strand Central Chains



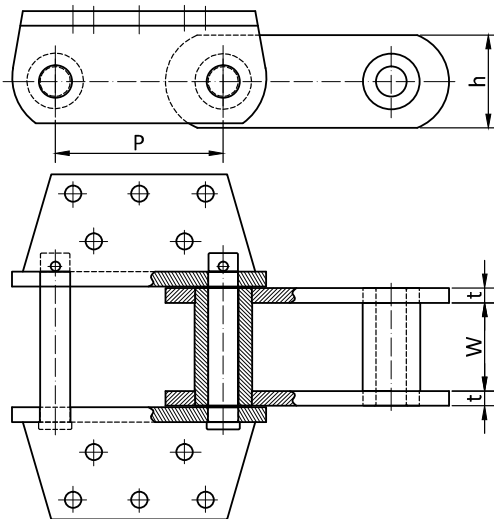
ARRANGEMENT K24



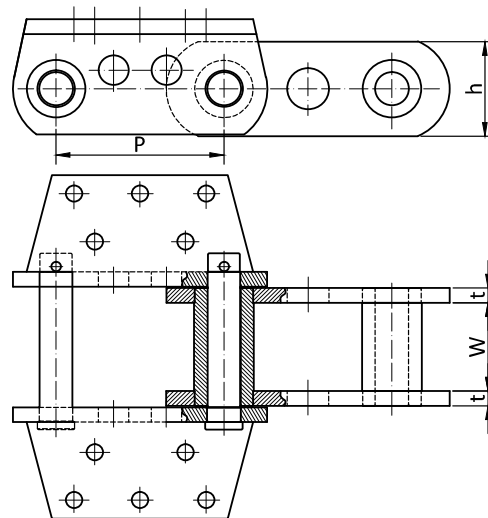
ARRANGEMENT K24



ARRANGEMENT K24



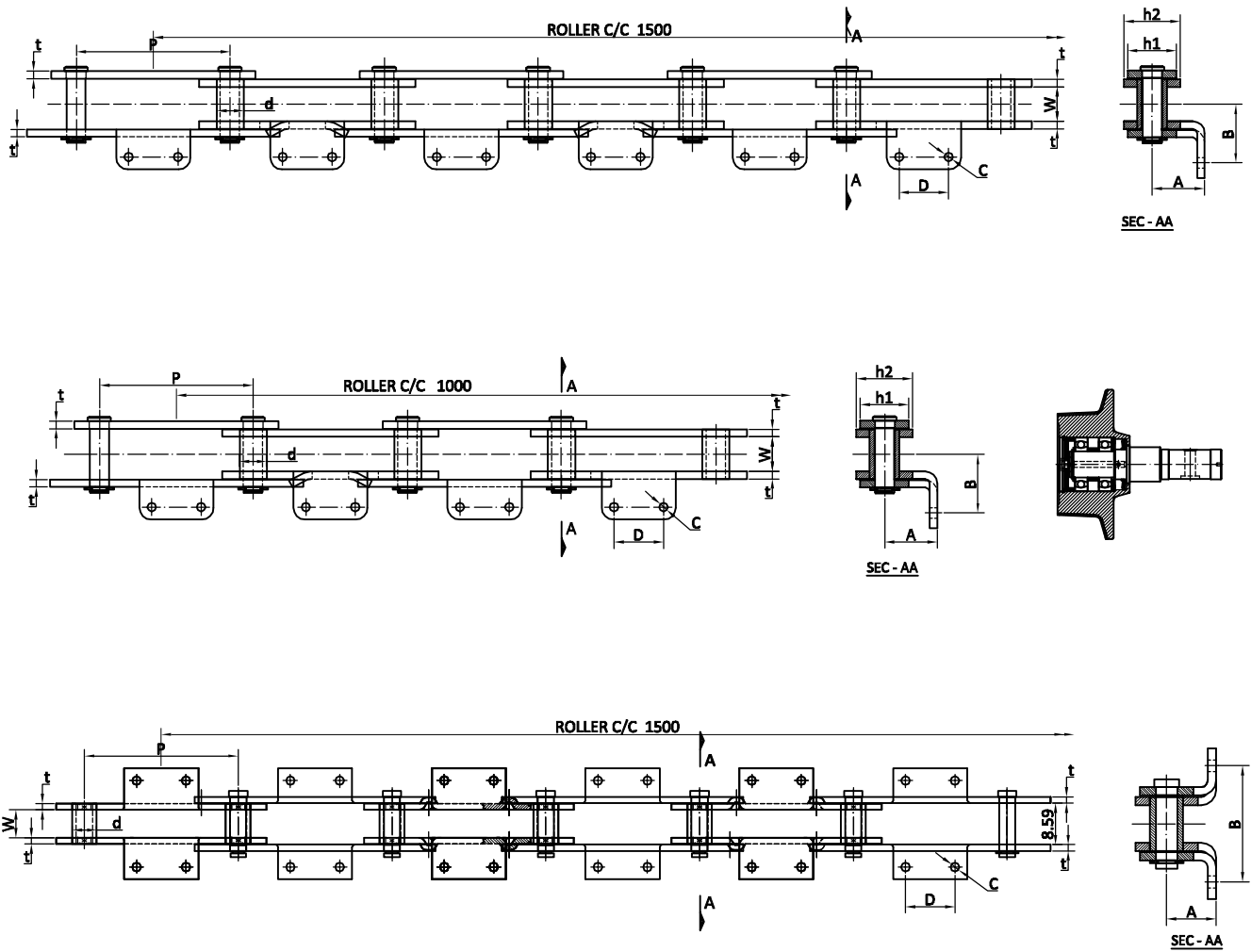
ARRANGEMENT K443



ARRANGEMENT K443

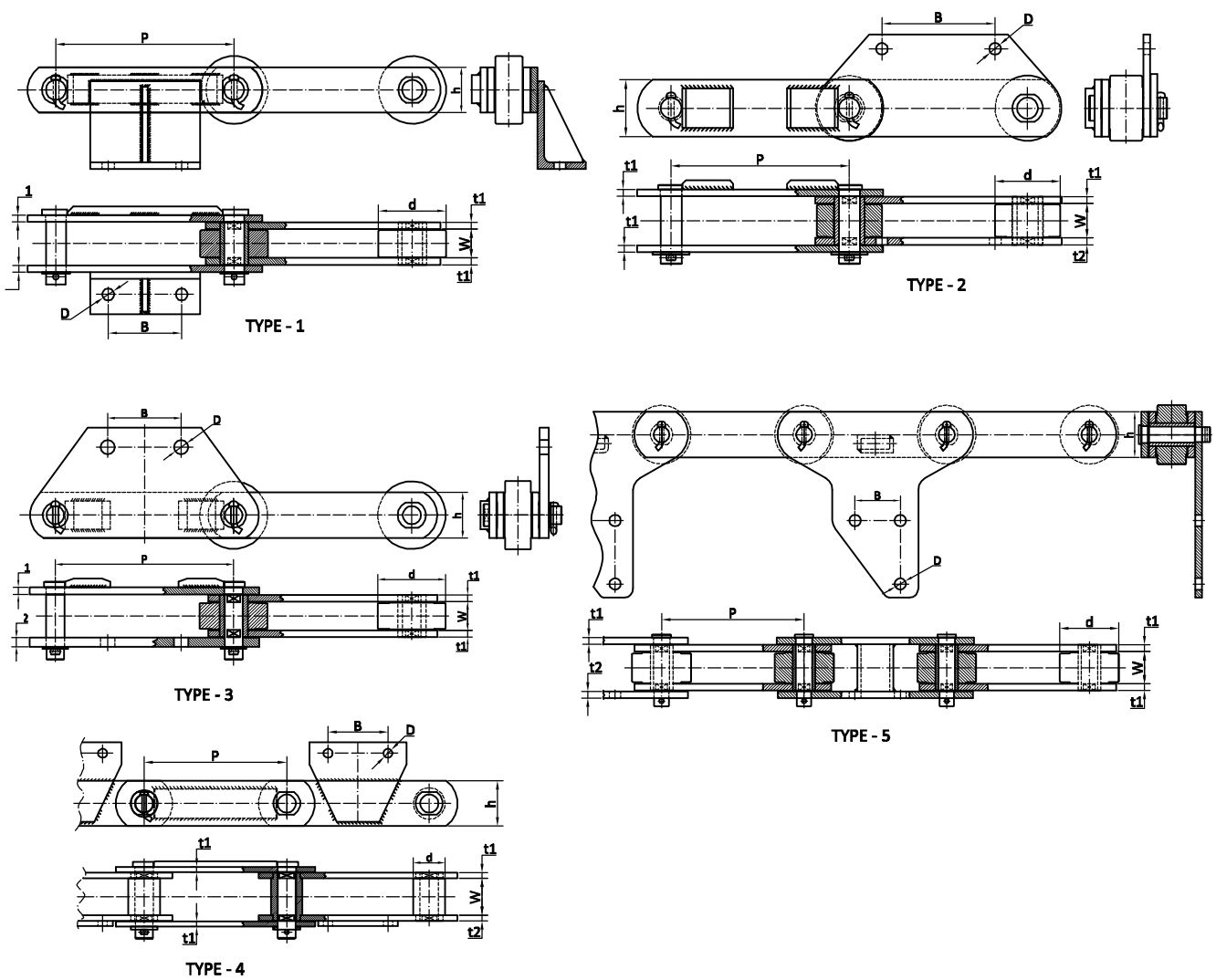
Type	Arrgt.	Pitch	Width	Link Height	Link Thickness	Pin $\phi$	Bush $\phi$
		P	W	h	t	d1	d2
		mm	mm	mm	mm	mm	mm
ICR856	K24	152.4	76.2	63.5	13	25.4	44.5
ICR956	K24	152.4	76.2	76	13	25.4	44.5
ICR857	K24	152.4	76.2	84	13	25.4	44.5
ICR958	K24	152.4	76.2	84	14	28.6	50.8
ICR859	K24	152.4	95	102	16	31.8	60.5
ICR864	K443	177.8	95	102	16	31.8	60.5
ICR984	K443	177.8	95	102	16	34.9	63.5

## Pan Conveyor Chains with Accessories



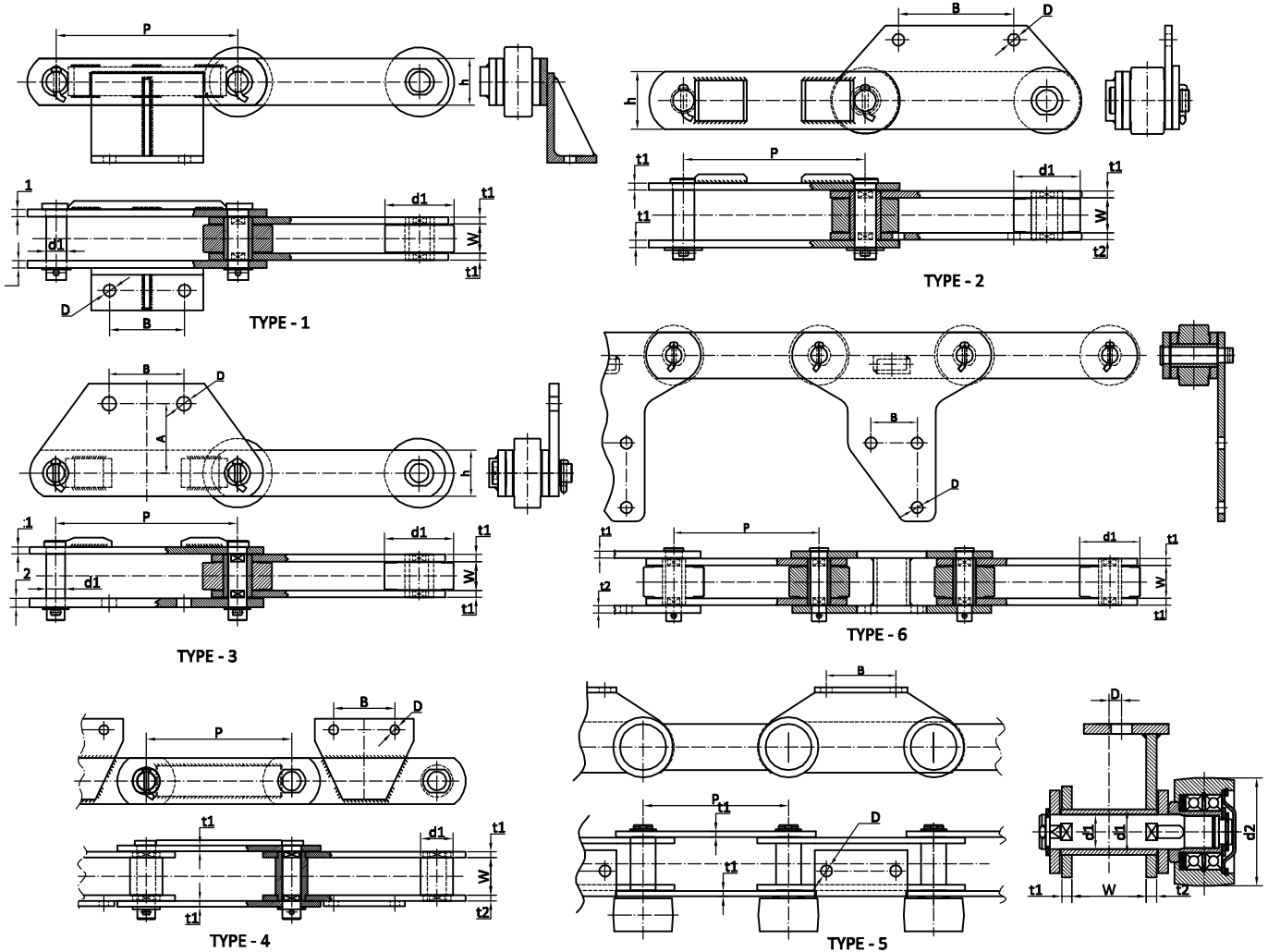
Type	Pitch	Width	Link Height		Link Thk.	Bush $\phi$				
	P	W	h1	h2	t	d	A	B	C	D
DP5570	250	55	70	85	12	44	71	85.5	$\phi 14$	80
DP4665	250	46	65	75	10	40	60.5	70	$\phi 14$	80
DP3045	250	30	45	55	8	32	60.5	70.5	$\phi 14$	80
DP6085	250	60	85	100	12	52	70.5	85.5	$\phi 14$	80
DP4565	250	45	65	75	10	40	59.5	140	$\phi 14$	80
DP6090	250	60	90	100	10	60	70	85.75	$\phi 14$	80
DP4570	250	45	70	70	10	40	60	70.5	$\phi 14$	80
DP6090	250	60	90	90	12	44	70	85	$\phi 14$	80

## Stacker & Reclaimer Chains



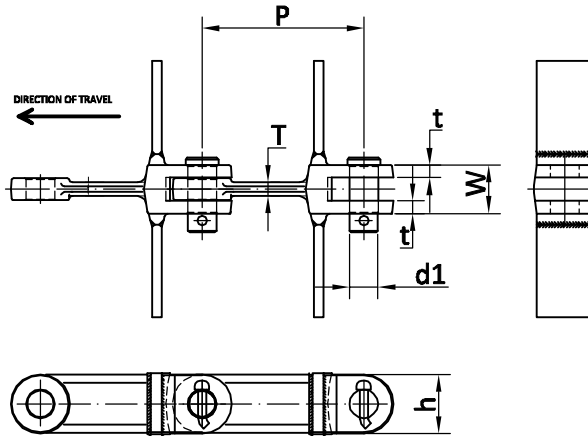
CHAIN NO.	Chain Type	Pitch P	Width W	Link Height h	Link Thk. t1	Link Thk. t2	Scraper Link d	Roller ø B	Holeø D	Breaking Load (KN)
ICR25048100	1	250	48	70	10	10	100	90	22	650
ICR2506575	1	250	65	60	12	12	75	100	22	500
ICR25053100	2	250	53	75	12	12	100	160	21	700
ICR25055115	2	250	55	100	20	20	115	210	25	1400
ICR2505595	2	250	55	80	12	12	95	160	21	700
ICR2504285	3	250	42	65	10	12	85	130	22	600
ICR2505685	3	250	56	70	10	10	85	170	22	450
ICR2503685	3	250	36	65	10	10	85	130	21	500
ICR25057115	3	250	57	100	20	20	115	90	27.5	1600
ICR2505880	3	250	58	60	8	8	80	180	21	400
ICR2505985	3	250	59	65	10	10	85	180	21	500
ICR2505685	4	250	56	70	10	10	85	170	21	450
ICR25048100	5	250	48	70	10	10	100	90	18	600
ICR2504996	5	250	49	70	10	10	96	90	18	600

## Stacker & Reclaimer Chains



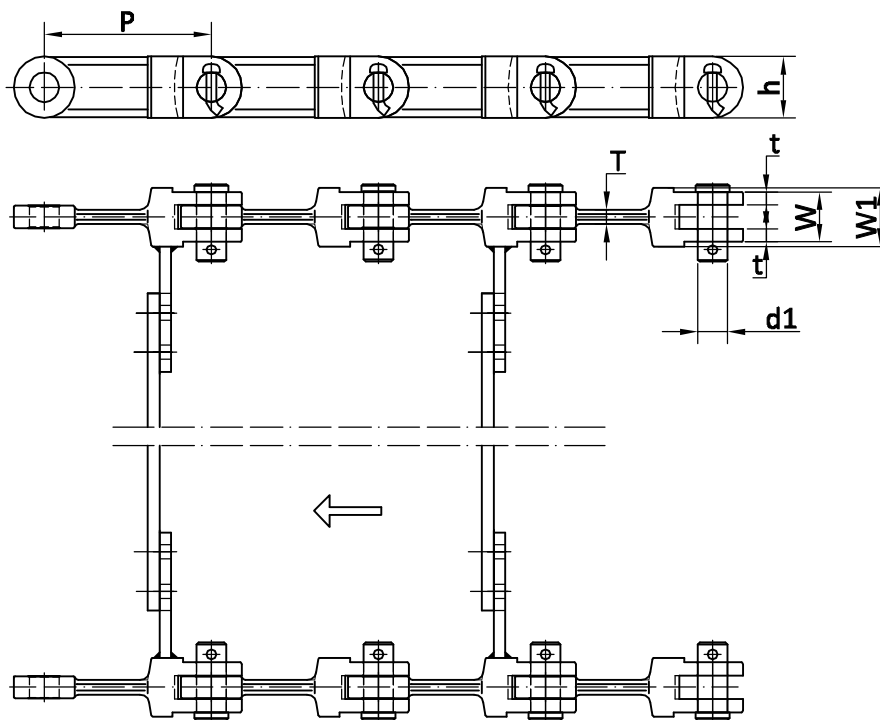
CHAIN NO.	Chain	Pitch	Width	Link Height	Link Thk.	Scraper Link	Roller $\phi$	Hole $\phi$	Breaking	Roller $\phi$	
	Type	P	W	h	t1	t2	d1	D	Load (KN)	d2	
ICR31551120	1	315	51	80	12	12	120	130	21	700	
ICR31556100	1	315	56	80	12	12	100	120	22	770	
ICR31570130	1	315	70	100	15	15	130	130	25	1400	
ICR31570150	1	315	70	100	15	15	150	130	25	1400	
ICR31560115	2	315	60	100	12	12	115	200	21	1050	
ICR31566125	2	315	66	100	12	12	125	170	21	940	
ICR31566110	2	315	66	90	16	16	110	170	21	1000	
ICR31561115	2	315	61	100	18	18	115	200	21	1100	
ICR31576125	2	315	76	110	20	20	125	170	25	1600	
ICR40076125.1	2	400	76	110	20	20	125	180	25	1600	
ICR31550120	3	315	50	75	12	16	120	130	25	700	
ICR31556130	3	315	56	110	12	16	130	130	25	1200	
ICR31565120	3	315	65	100	14	14	120	200	25	1100	
ICR3158270	4	315	82	100	12	12	70	132	20	1000	
ICR3156650	5	315	66	80	12	12	50.15	130	22	700	100
ICR3159055	5	315	90	100-110	12	12	54.7	150	22	1150	130
ICR31570125	6	315	70	110	15	15	125	100	25	1150	

## Forged Link Chains for Single Strand and Double Strand Conveyors



### SINGLE STRAND

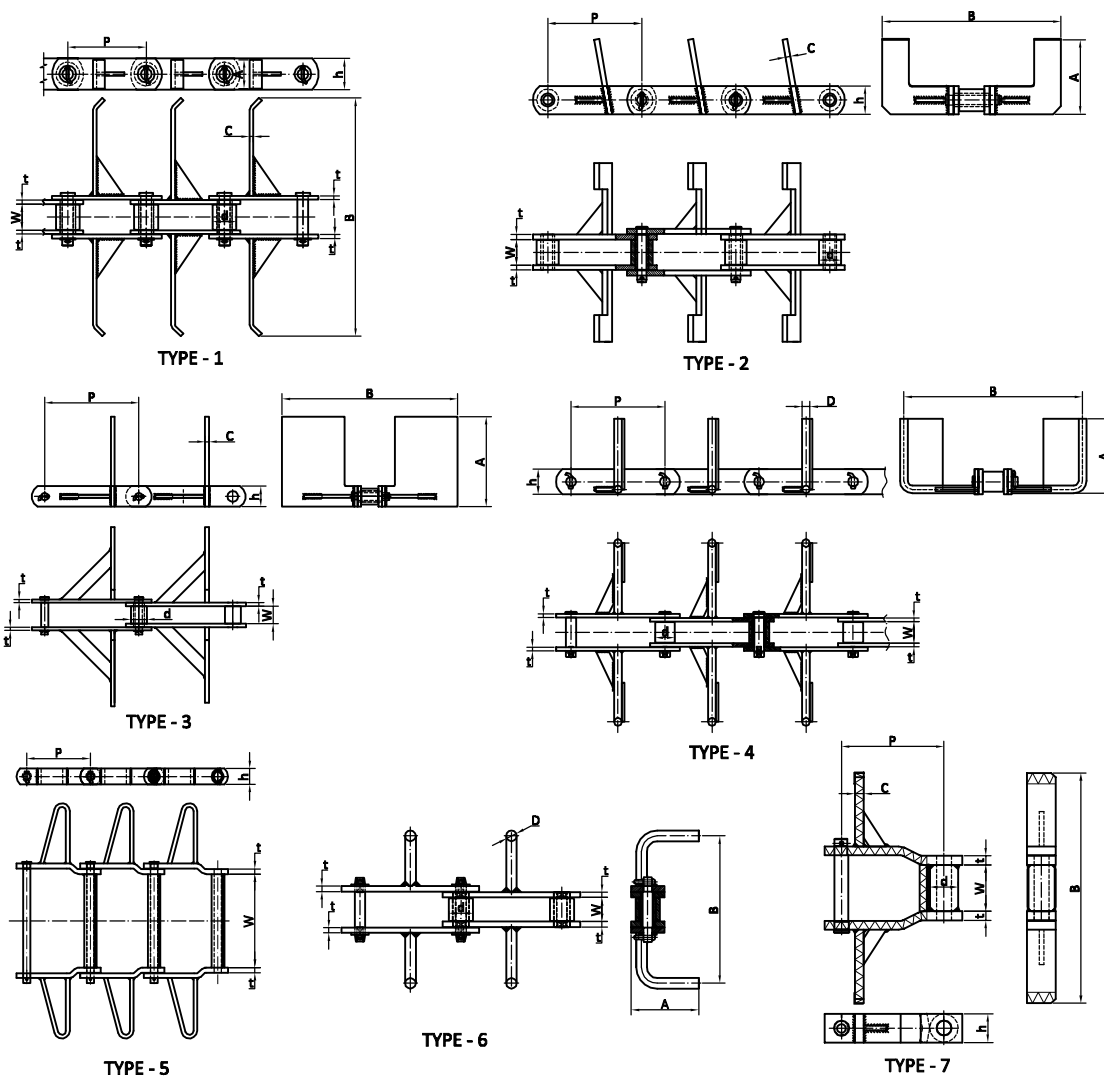
Chain No.	Pitch	Link Height	Eye Thickness	Fork Width	Pin $\phi$	Stem Thickness		Breaking Strength
ICR101L	101.6	36	12	30	14	8	6	130
ICR142L	142	50	19	42	25	13	9	270
ICR142M	142	50	25	54	25	16	12	350
ICR142H	142	50	28	59	25	16	12	440
ICR200H	200	50	28	59	25	16	12	500
ICR216H	216	76	28	74	35	19	14	600



### DOUBLE STRAND

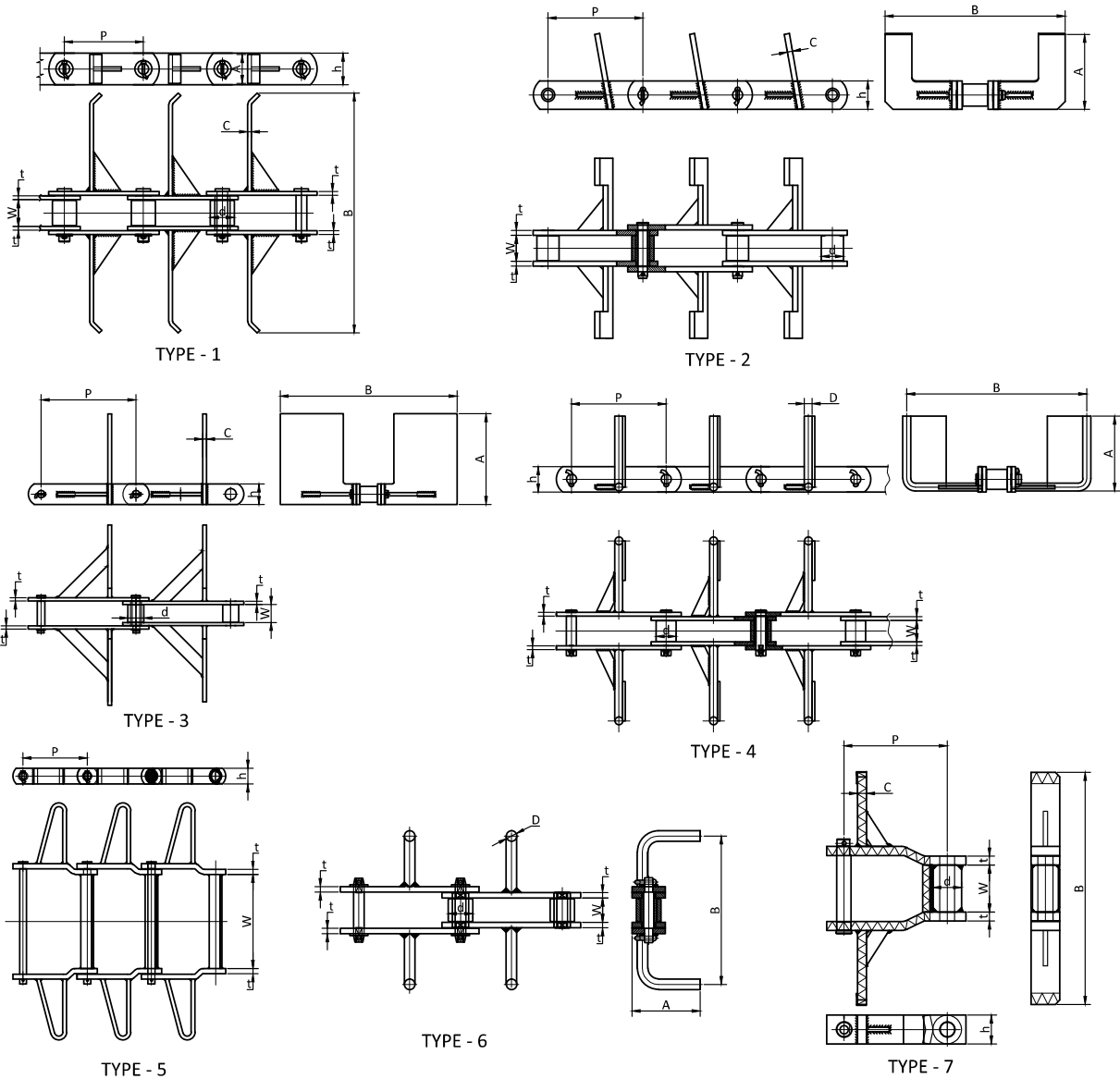
Chain No.	Pitch	Link Height	Eye Thickness	Fork Width	Pin $\phi$	Stem Thickness	Overall Width	Scraper gap	Breaking Strength	
ICRD142M	142	50	19	42	25	13	9	70	13	270
ICRD142H	142	50	29	62	25	16	12	82	13	440
ICRD200M	200	50	25	60	25	20	14	82	13	350
ICRD200H	200	60	30	70	30	20	14	100	16	500
ICRD250H	250	60	30	70	30	20	14	100	16	500

## Flow Conveyor Chains & Drag Chains



CHAIN NO.	Chain	Pitch	Width	Link Height				Roller $\varnothing$			Round $\varnothing$
	Type	P	W	h	t	d	A	B	C	D	
ICR-FC-01	1	200	37	45	8	38	45	329	8	...	
ICR-FC-02	1	125	42	50	6	25	46	380	6	...	
ICR-FC-03	2	300	75	90	16	70	240	570	16	...	
ICR-FC-04	3	300	56	65	10	50	285	560	12	...	
ICR-FC-05	4	300	67.5	80	12	63.5	240	570	25	...	
ICR-FC-06	5	203.2	299	50	16	...	50	660	12	...	
ICR-FC-07	5	203.2	300	50	12	...	50	750	12	...	
ICR-FC-08	6	152.4	36.5	50	8	36.5	102	222.5	...	16	
ICR-FC-09	6	200	58	75	10	48.5	160	358	...	20	
ICR-FC-10	6	200	54	60	10	44.5	155	295	...	20	
ICR-FC-11	6	200	52	60	10	44.5	151	355	...	20	
ICR-FC-12	6	200	54	60	10	44.5	155	374	...	20	
ICR-FC-13	6	300	68	90	12	69	228	428	...	25	
ICR-FC-14	7	228.6	104	65	20	63.4	64	546	20	...	

## Flow Conveyor Chains & Drag Chains



CHAIN NO.	Chain Type	Pitch P	Width W	Link Height h	t	Roller ø d	A	B	C	Roller ø D
ICR-FC-01	1	200	37	45	8	38	45	329	8	.....
ICR-FC-02	1	125	42	50	6	25	46	380	6	.....
ICR-FC-03	2	300	75	90	16	70	240	570	16	.....
ICR-FC-04	3	300	56	65	10	50	285	560	12	.....
ICR-FC-05	4	300	67.5	80	12	63.5	240	570	25	.....
ICR-FC-06	5	203.2	299	50	16	.....	50	660	12	.....
ICR-FC-07	5	203.2	300	50	12	.....	50	750	12	.....
ICR-FC-08	6	152.4	36.5	50	8	36.5	102	222.5	.....	16
ICR-FC-09	6	200	58	75	10	48.5	160	358	.....	20
ICR-FC-10	6	200	54	60	10	44.5	155	295	.....	20
ICR-FC-11	6	200	52	60	10	44.5	151	355	.....	20
ICR-FC-12	6	200	54	60	10	44.5	155	374	.....	20
ICR-FC-13	6	300	68	90	12	69	228	428	.....	25
ICR-FC-14	7	228.6	104	65	20	63.4	64	546	20	.....



## **INDO CHAINS (RAIPUR) PVT. LTD.**

CIN NO. U28112WB2009PTC139030, GST NO. : 22AACCI1580N2ZJ

PLOT NO. 14& 2 PART, INDUSTRIAL AREA, BHANPURI, P.O.-BIRGAON, RAIPUR, CHHATTISGARH. (INDIA) PIN: - 493221

Ph : +91-771-2562035, +91-771-2562414 Mob. +91-9826420222, +91-7898920222 Fax : +91-771-2562514

Email : sales@indochains.com, info@indochains.com Web : www.indochains.com / www.indochainsgroups.com

